



GAT MONTHLY MEMBERSHIP PROGRESS REPORT

Results as of: 6/30/2023

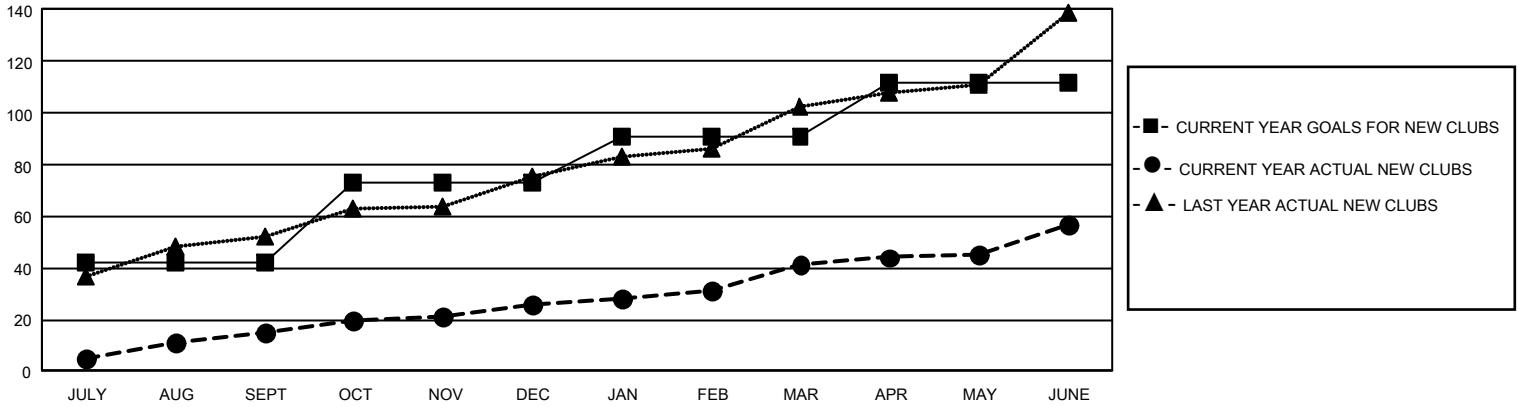
GMT Constitutional Area 6, Group H

REPORT DOES NOT INCLUDE CLUBS IN UNDISTRICTED AREAS.

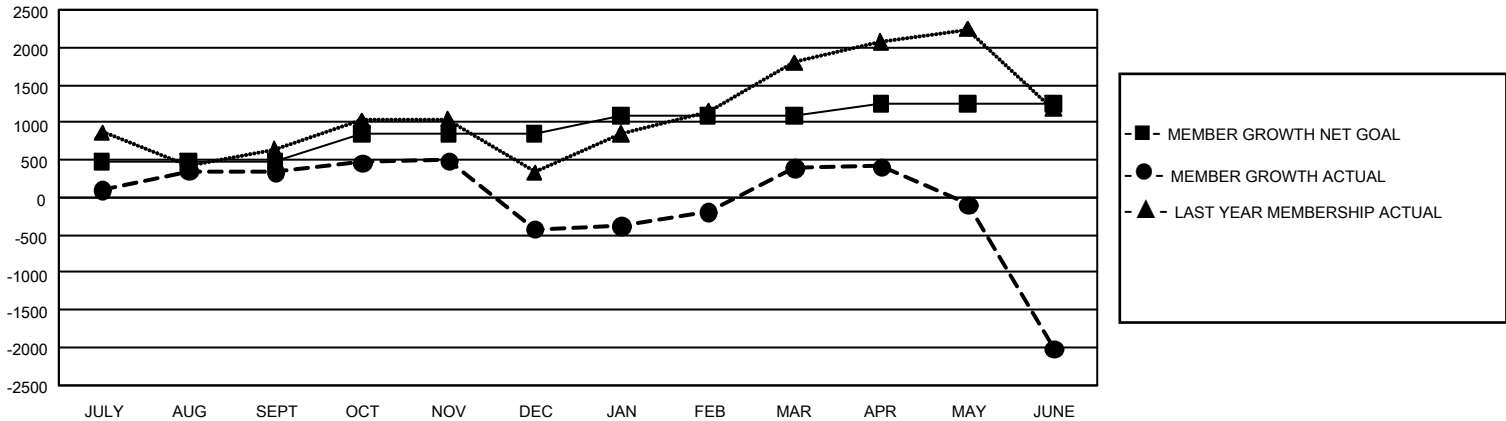
Clubs			
RESULTS FOR 2022-2023			
QUARTER	NEW CLUB GOAL	NEW CLUBS	DROPPED CLUBS
JULY/AUG/SEPT	126	15	8
OCT/NOV/DEC	93	11	36
JAN/FEB/MAR	54	15	13
APR/MAY/JUNE	63	16	22

Members			
RESULTS FOR 2022-2023			
QUARTER	MEMBER GROWTH NET GOAL	MEMBER GROWTH ACTUAL	DROPPED MEMBERS ACTUAL (including transfers)
JULY/AUG/SEPT	480	1,337	845
OCT/NOV/DEC	370	938	1,647
JAN/FEB/MAR	235	1,690	630
APR/MAY/JUNE	165	1,509	3,706

GOALS AND ACTUAL NEW CLUBS CUMULATIVE



GOALS AND ACTUAL MEMBERS CUMULATIVE



DROPPED CLUBS: 79	692 CLUBS OF 1,188 ADDED 1 OR MORE NEW MEMBERS	GENDER DISTRIBUTION	
		MALE 21,261 (68.67%) FEMALE 9,687 (31.29%) NON BINARY 0 (0.00%) PREFER NOT TO ANSWER 13 (0.04%)	
DROPPED MEMBERS		CLICK HERE FOR CUMULATIVE MEMBERSHIP DATA	TOTAL FAMILY UNIT MEMBERS 18,118
DECEASED 106 CLUB CANCELLED 1,269 OTHER 5,453 TOTAL 6,828			FAMILY MEMBERS PAYING HALF DUES 11,033